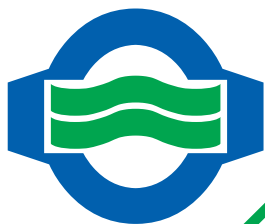


G. GIOANOLA



SUPERDRY 8 DIGIT COUNTER ROTATING THROUGH 360° FOR EASY READING DRY DIAL

MID

2004/22/CE



MODELS

USF-8/15 - USC-8/15

USF-8/20 - USC-8/20

- ❖ Single jet **Super Dry** turbine water meter
- ❖ Rotating counter through 360° for easy reading in any installation position
- ❖ Straight reading on 8-digit roller counter: 5 black digit for cubic metres and 3 red digits for litres
- ❖ For turbid, calcareous water with suspended sediments: a completely dry and unsubmerged register. The impeller is the only part in contact with water.
- ❖ USF-8 model for cold water, measuring range R80, temperature classes 30°C and 50°C
- ❖ USC-8 model for hot water, measuring range R80, temperature classes 70°C and 90°C
- ❖ USF-SA-8 FROST PROTECTION model for cold water, measuring range R80, temperature classes 30°C and 50°C equipped with water volume increase compensation system when frosting
- ❖ Protective cover and glass wiper available as options
- ❖ **U0-D0**: straight pipe not required upstream or downstream the meter
- ❖ May be installed in any position
- ❖ All models are **MID** approved according to the European Directive **2004/22/EC** (module B+D) and in compliance with the norms **EN 14154/2007** and **OIML R49/2006**; all models are also available approved in accordance with European Directive **75/33/EEC** Metrological Class B
- ❖ All models may be supplied with a pulse-emitting device or pre-equipped to retrofit a pulse-emitting device, upon request

SUPER DRY 8 DIGIT COUNTER

Nominal size of the meter			15 - 1/2	20 - 3/4				
Q ₃	Permanent flow rate	m ³ /h	2,5	4,0				
Q ₄	Maximum flow rate for short period	m ³ /h	3,125	5,0				
Q ₂	Transitional flow rate with measuring range R80 [MPE ±2%]	l/h	50	80				
Q ₁	Minimum flow rate with measuring range R80 [MPE ±5%]	l/h	31,25	50				
S	Accuracy at measuring range R80	l/h	7	15				
ΔP	Pressure loss class	bar	0,63	0,63				
MAP	Maximum allowed working pressure	bar	16	16				
	Dial register from/to	m ³	0,0001 / 100.000	0,0001 / 100.000				
A	Lenght without couplings	mm	110-80 115-170	130				
	Lenght with couplings	mm	190-160 195-250	228				
B	Maximum diameter	mm	72	72				
C	Height with open lid	mm	138	143				
D	Height with closed lid	mm	70	74				
E	Height of tube	mm	16	19				
	Weight with couplings	kg	0,660	0,840				
	Weight without couplings	kg	0,500	0,600				

MODELS:

Cold water – Temperature Class T30-T50 (°C)

USF-8/15 R80

USF-8/20 R80

Hot water – Temperature Class T70-T90 (°C)

USC-8/15 R80

USC-8/20 R80

Cold water – Temperature Class T30-T50 (°C)

With system that compensates the water increase when frosting

USF-8-SA/15 R80

USF-8-SA/20 R80

Different “R” values available upon request

The Company's policy is one of continuous product improvement and the right is reserved to modify the specification contained herein without notice.

PULSED WATER METER



REED SWITCH PULSE EMITTER – TECHNICAL DATA

- Contact ratings : 24 V - 0,2 A
- Standard length of cable supplied: 2 m

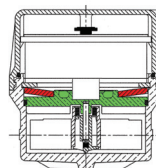
PULSE VALUES K

- Number of litres per pulse available (**pulse value must be stated when ordering**): 0,25 – 0,5 – 1

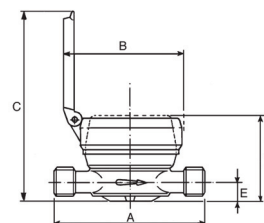
AVAILABLE OPTIONS ON REQUEST

- A non-return valve can be fitted upon request;
- All models can be customised with the serial number (also in bar code format) marked on the dial;
- Nickel-plated housing available upon request;
- Teflon-coated housing for demineralized water available upon request.

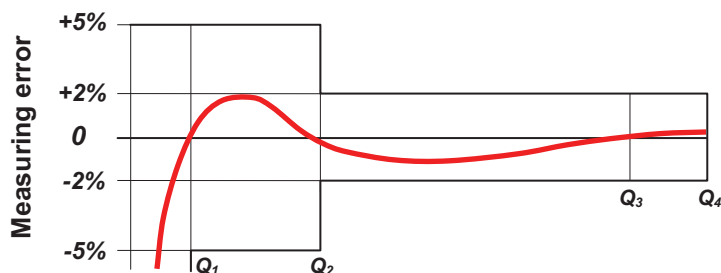
FROST PROTECTION SYSTEM



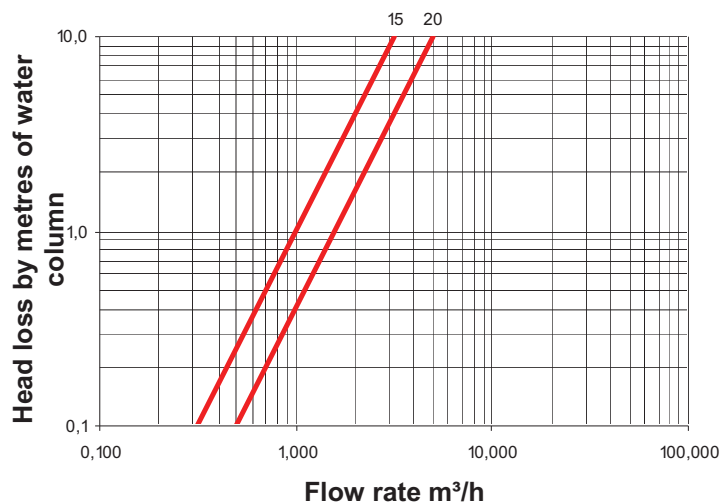
The water volume increase is absorbed by the Bauer Spring which will bring to normal conditions the pressure plate after de-frost, keeping unchanged the measuring accuracy characteristics.



TYPICAL ERROR CURVE



HEADLOSS DIAGRAM



G. GIOANOLA SISMA water meters

Str. Alessandria 50 - 14049 NIZZA MONF.TO (AT) ITALY - Tel. +39.0141.793536 - Fax +39.0141.702757 - E-mail: info@gioanola.it – <http://www.gioanola.it>